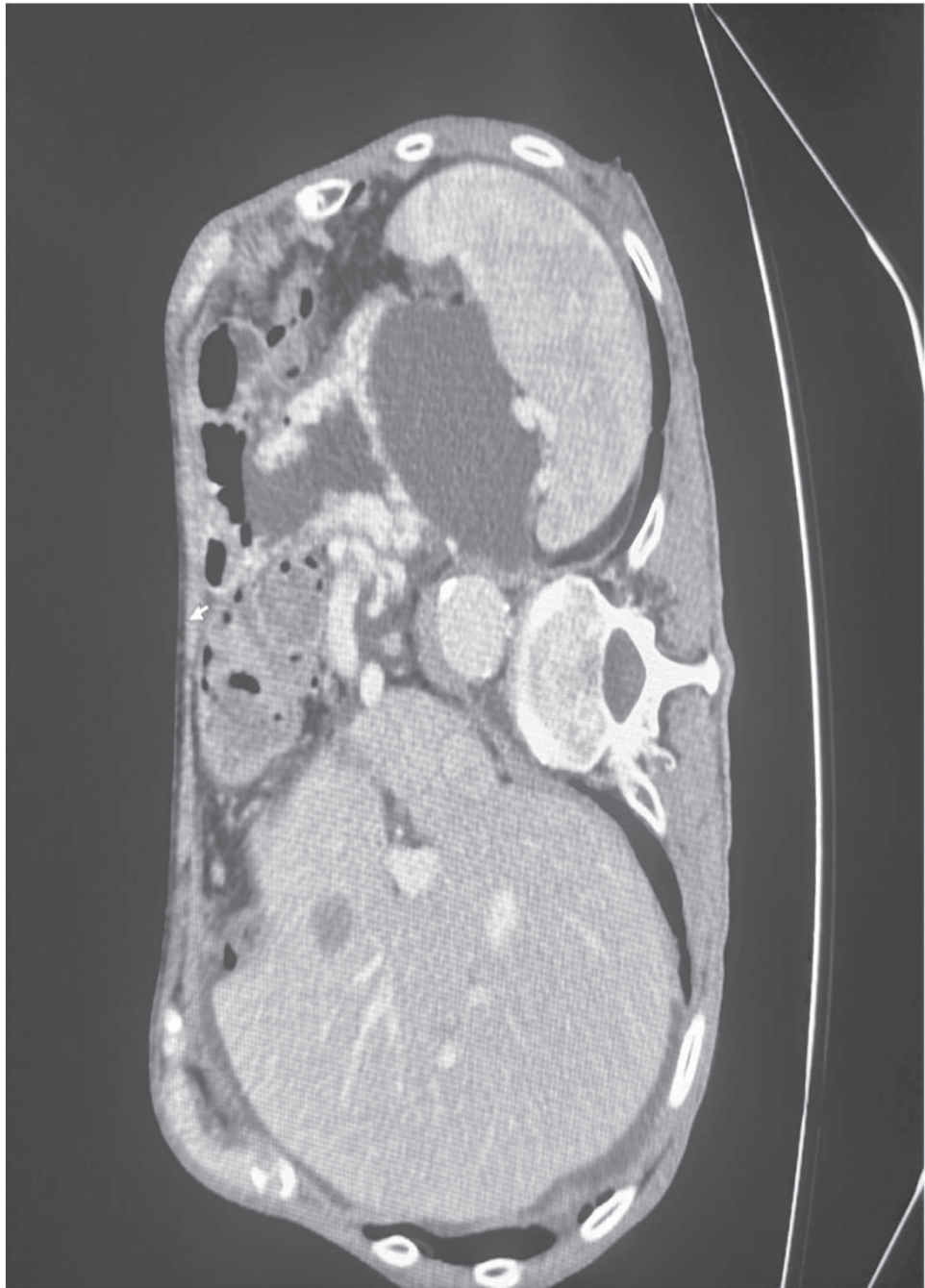
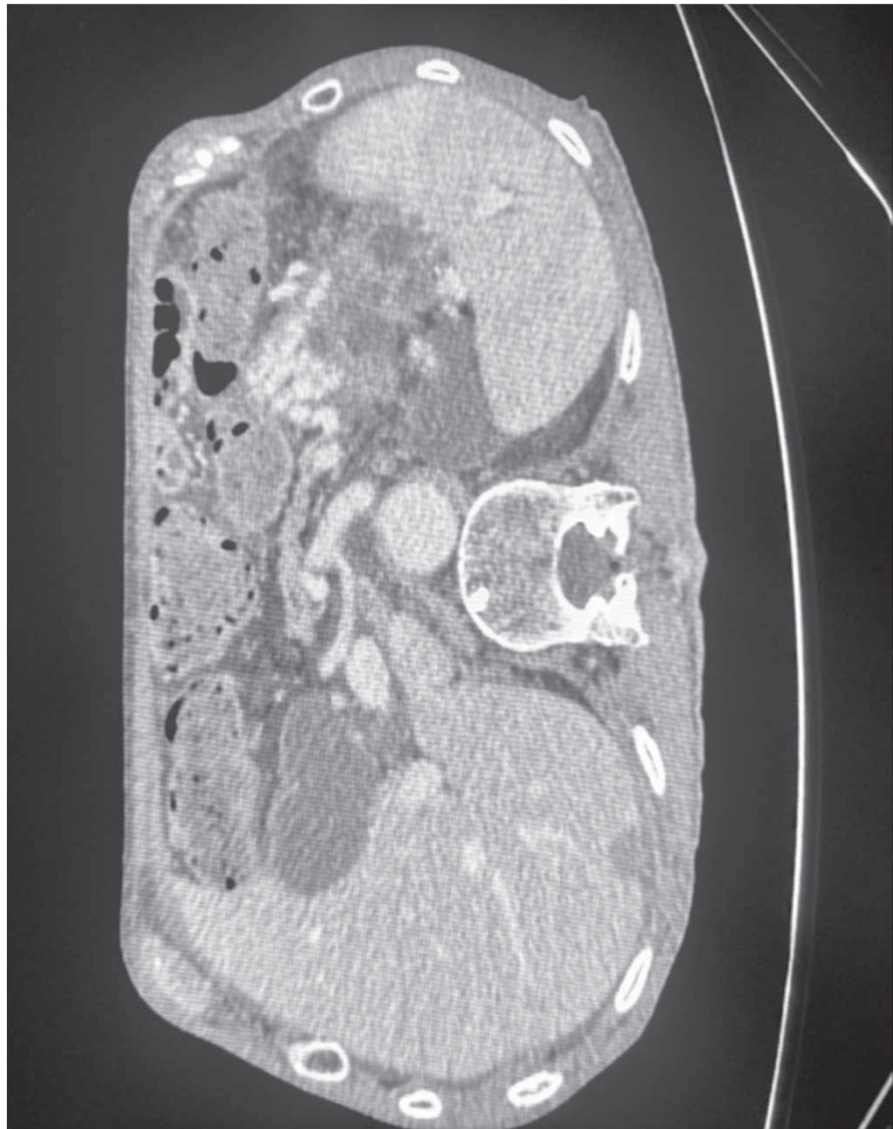
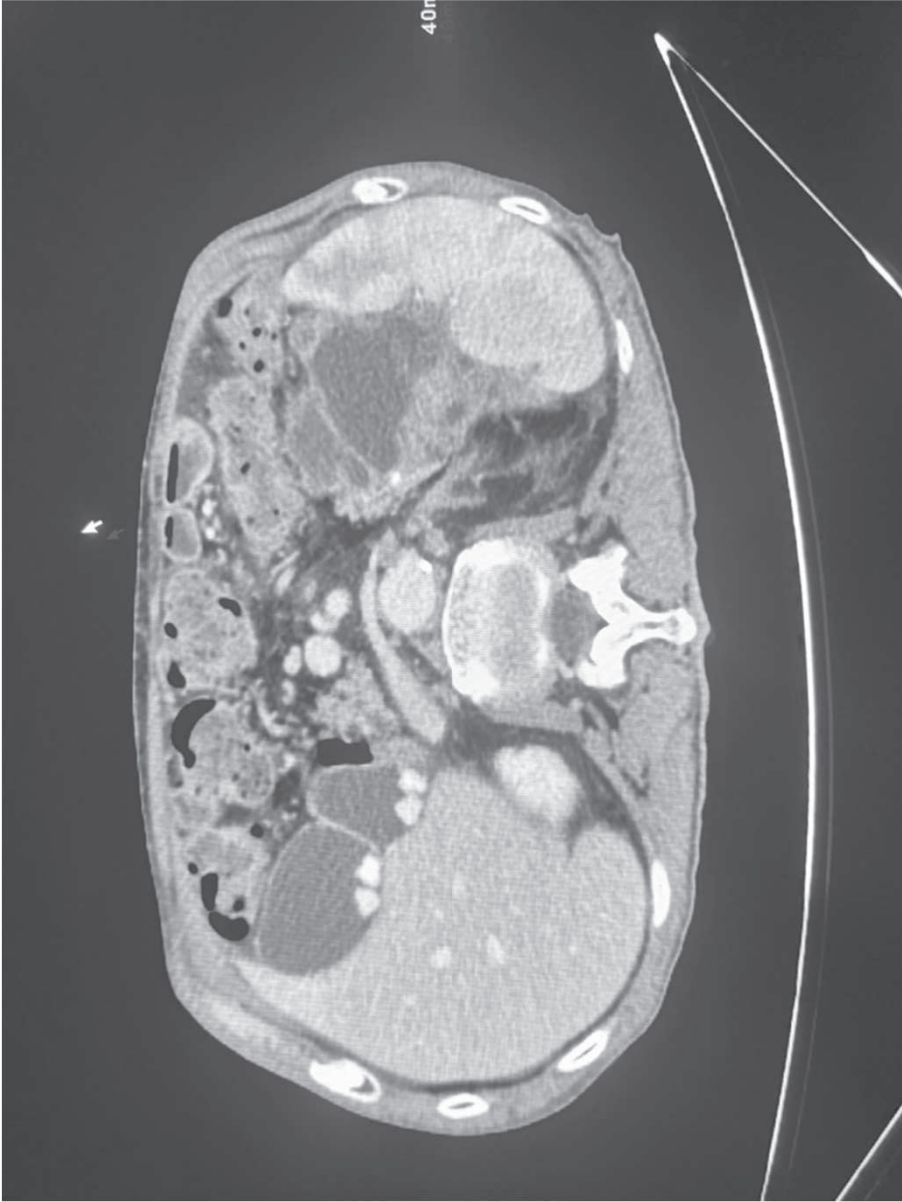


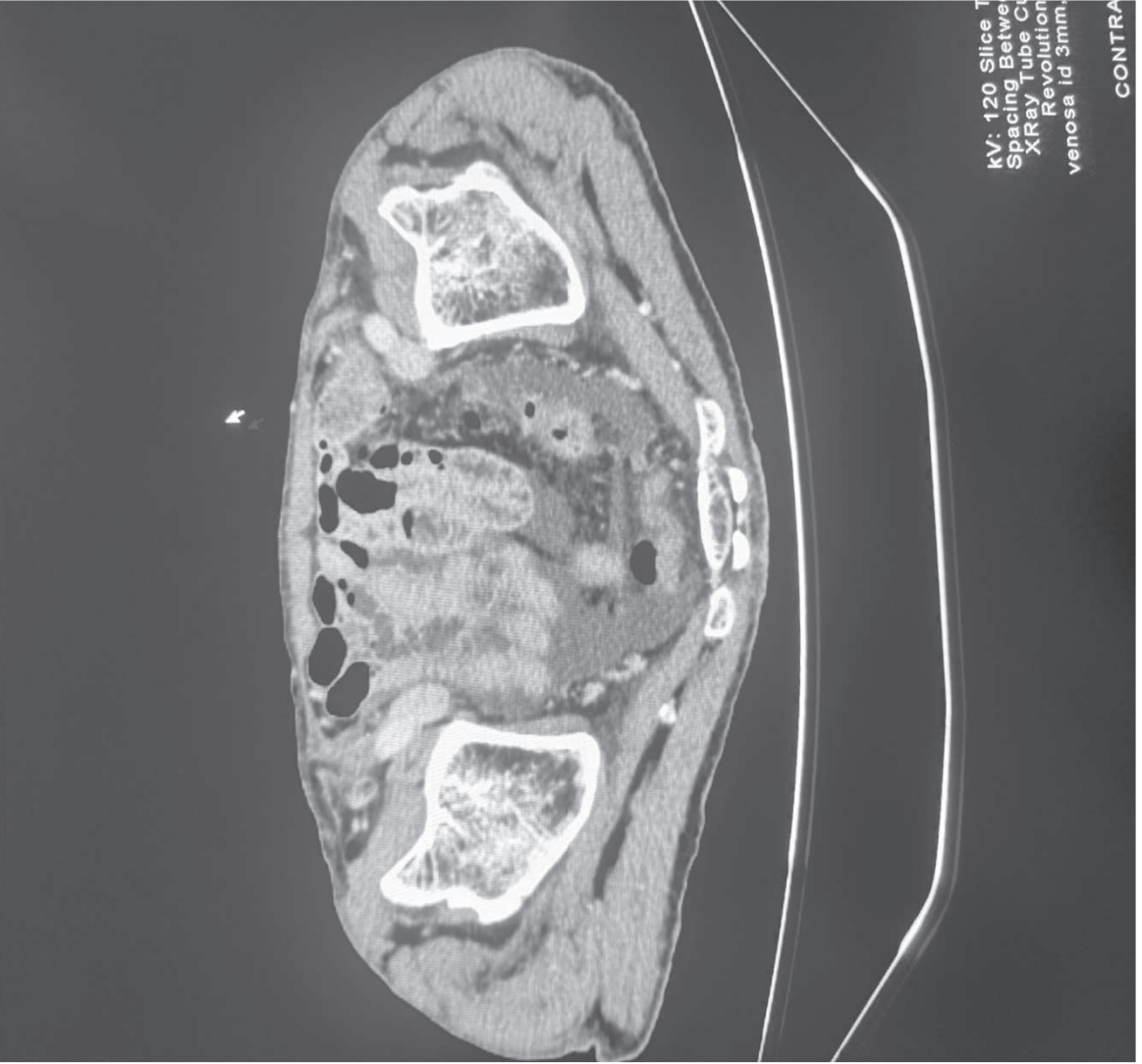
# PROVA PRATICA N. 1

- Paz maschio anni 90
- Accesso in PS per alvo chiuso
- Paz con severo declino cognitivo





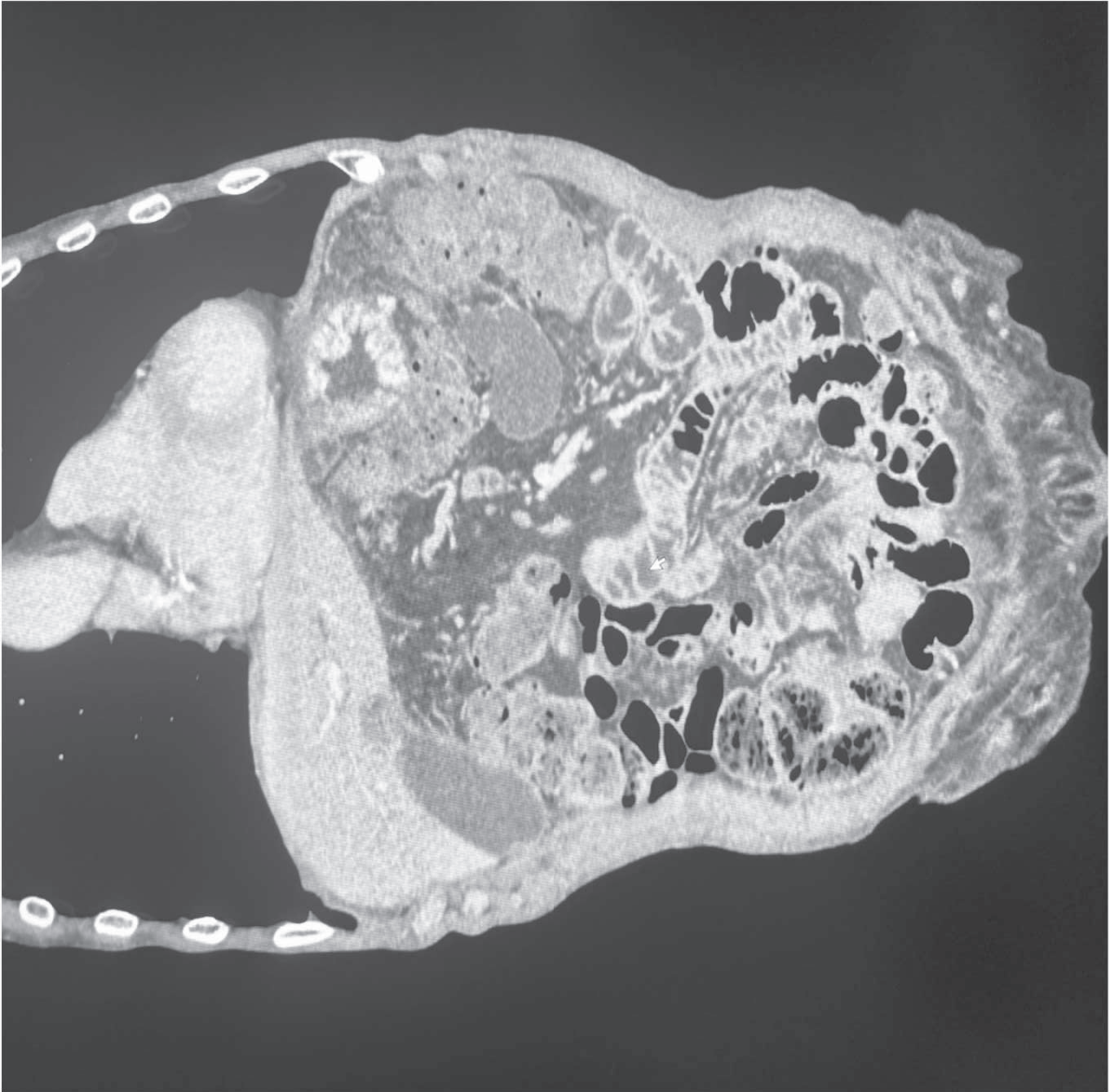


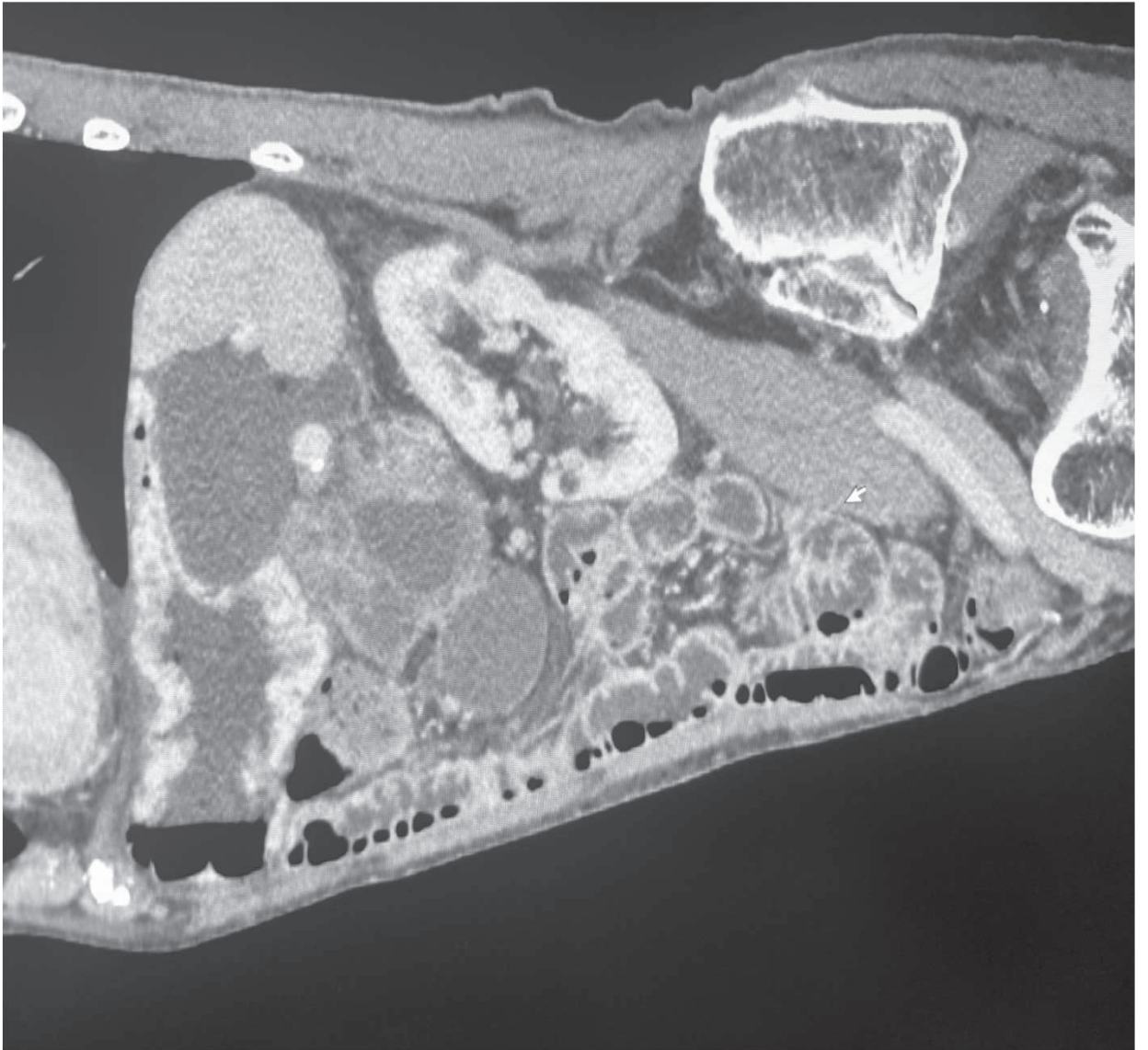


kV: 120 Slice T  
Spacing Betwe  
XRays Tube C  
Revolution  
venosa Id 3mm.

CONTRA





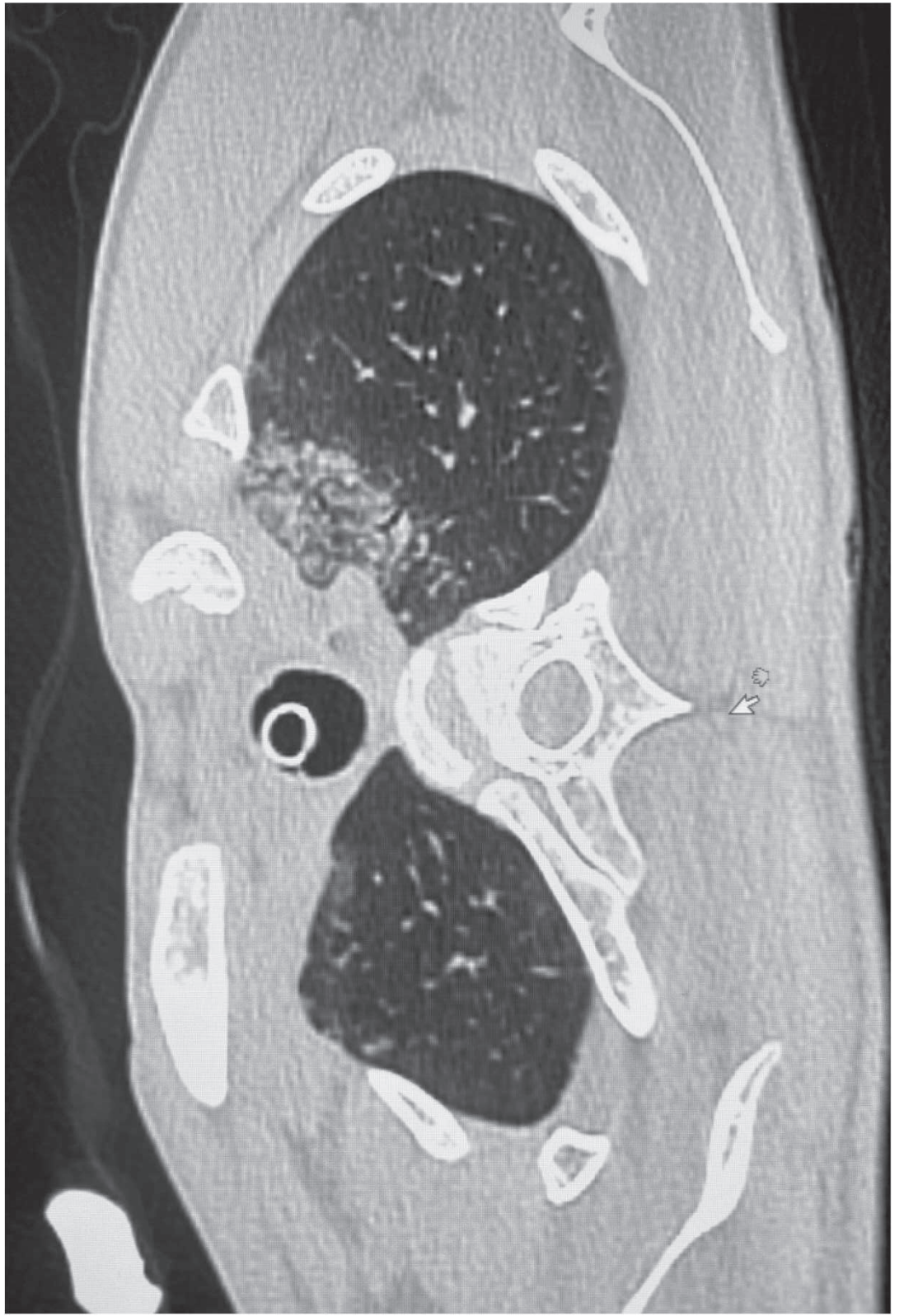


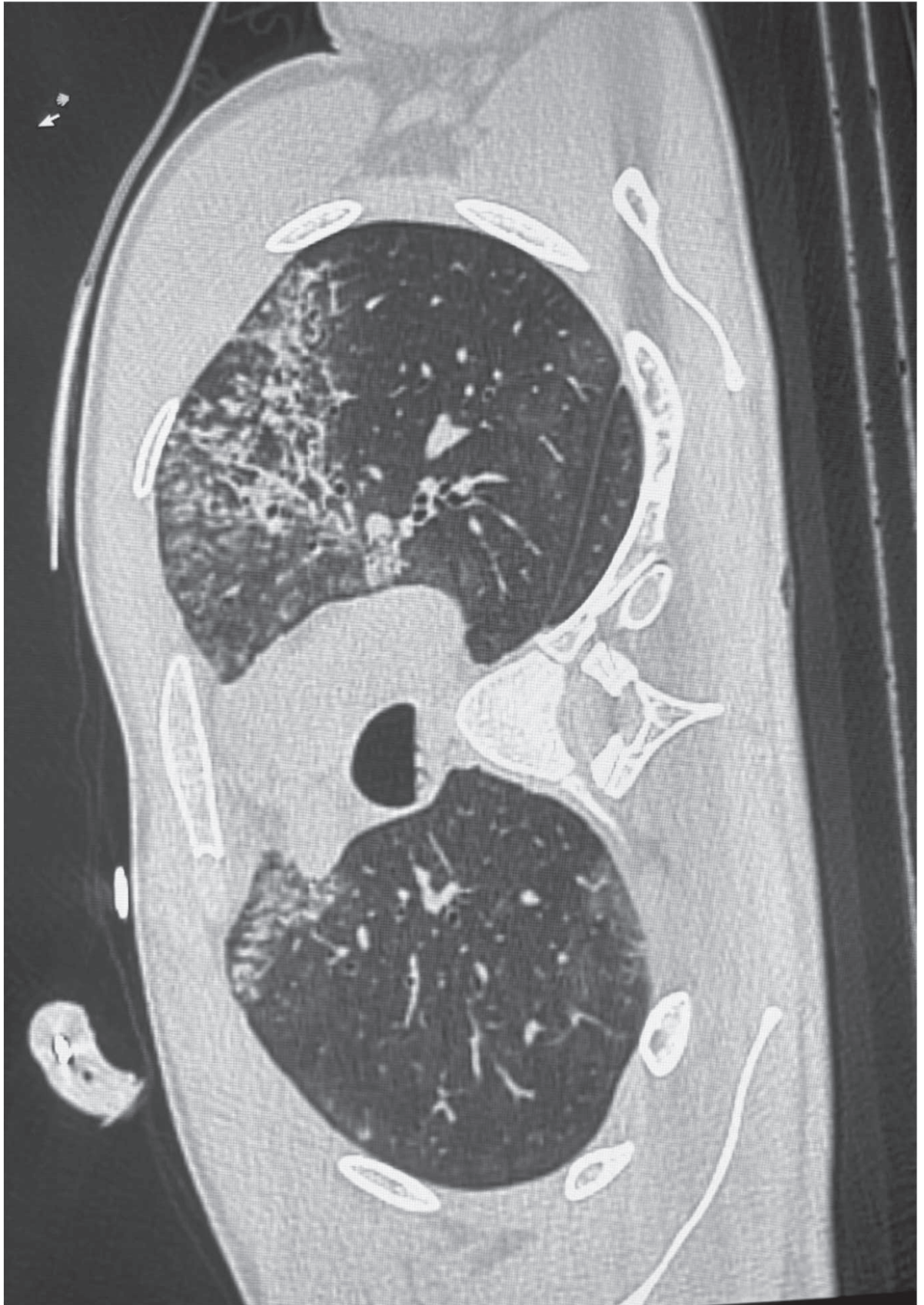
# Prova pratica n. 2

Trauma stradale auto contro camion

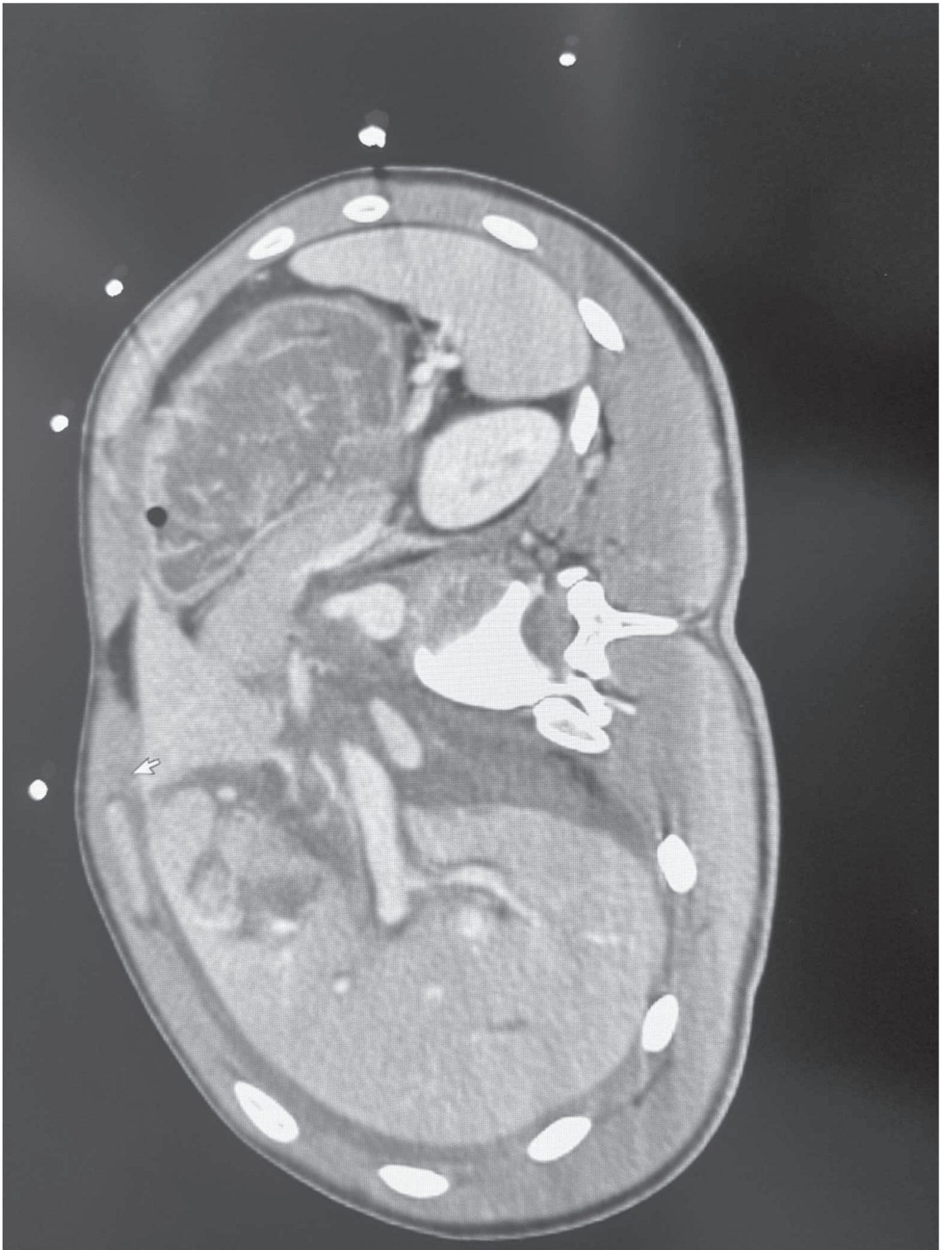
# Caso clinico 1

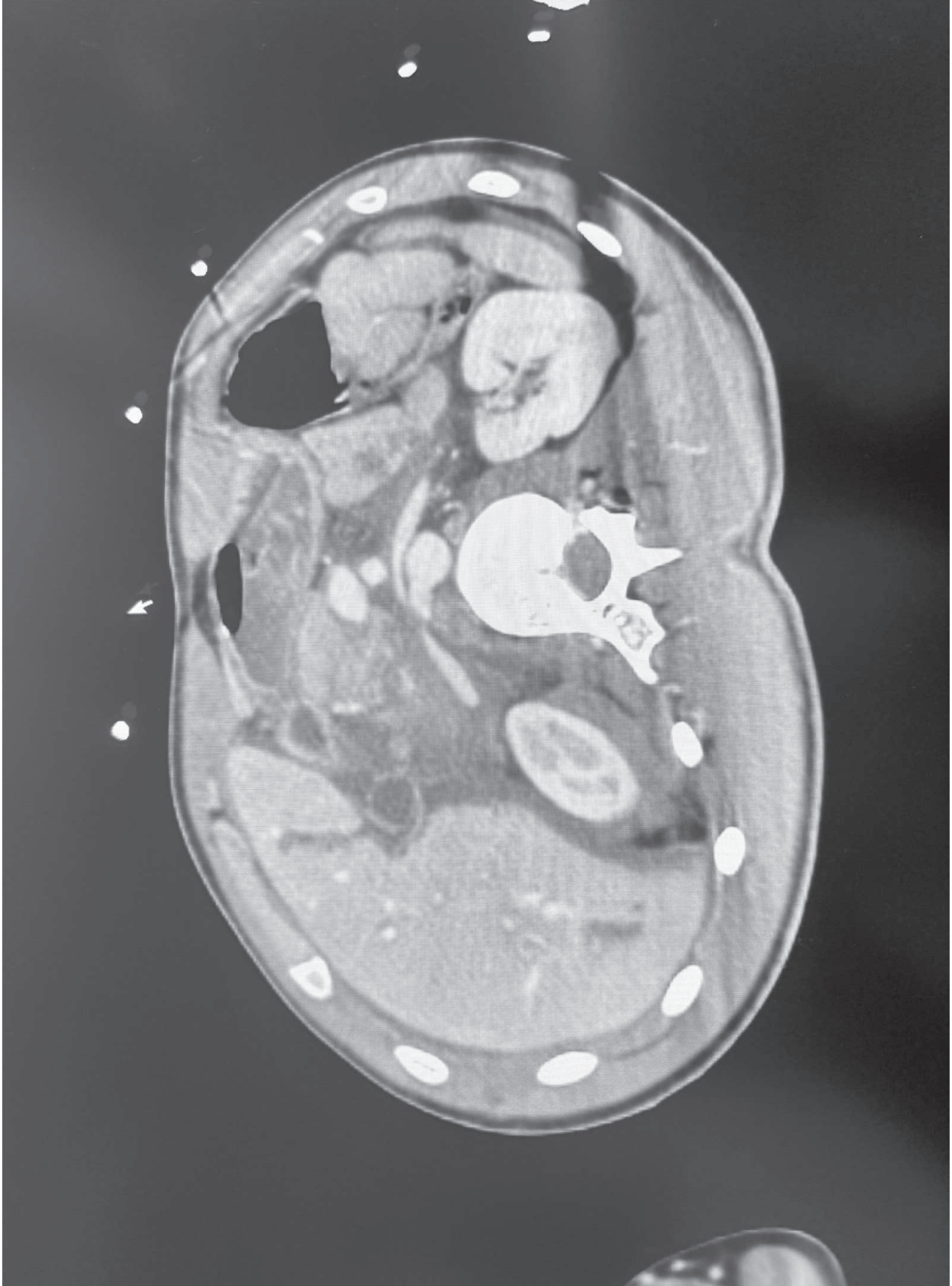
- Estricazione difficile
- Paziente cosciente
- Fratture esposte di entrambi gli arti inferiori
- Saturazione nei limiti
- Addome teso e globoso
- TC total body

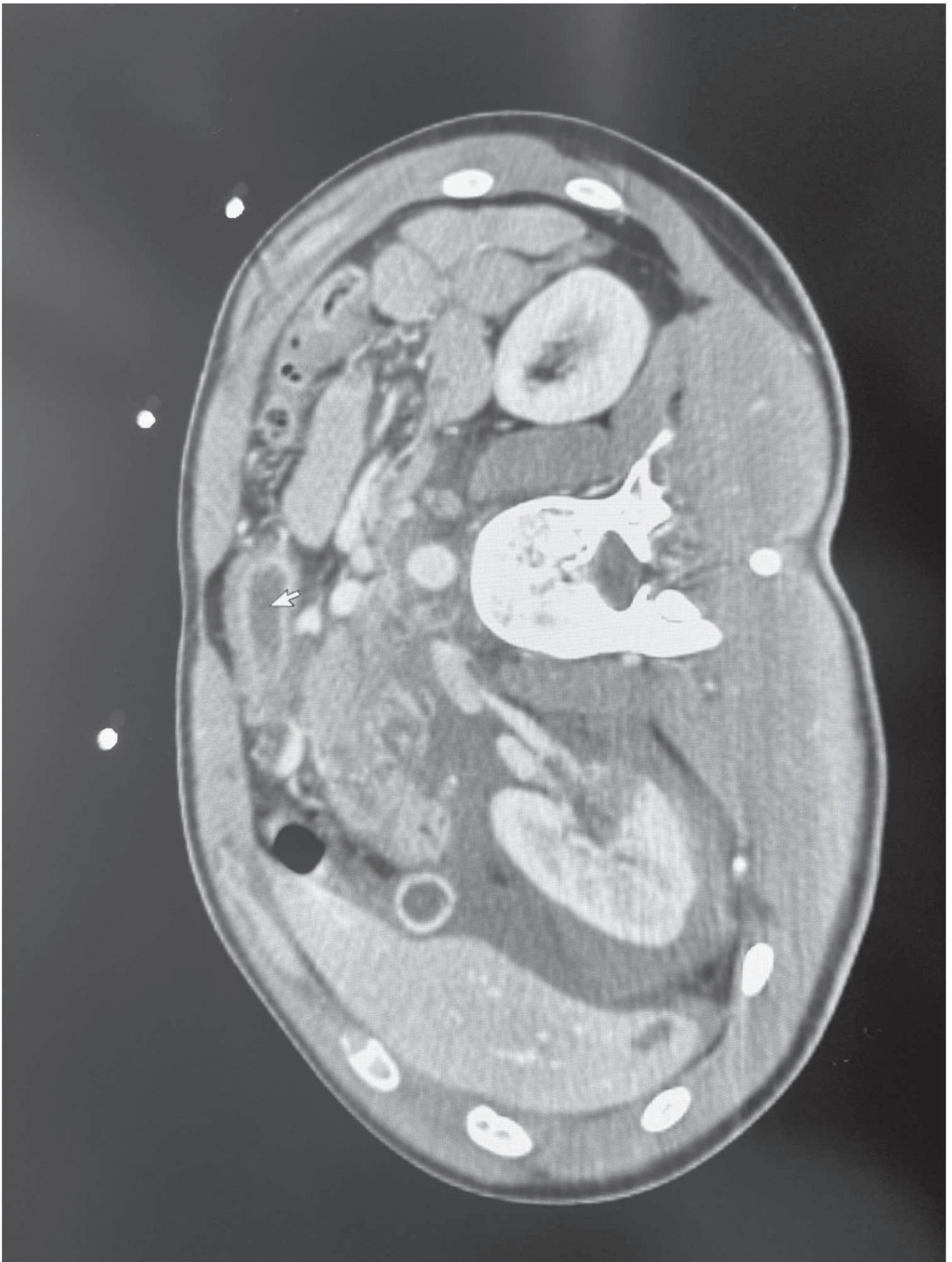






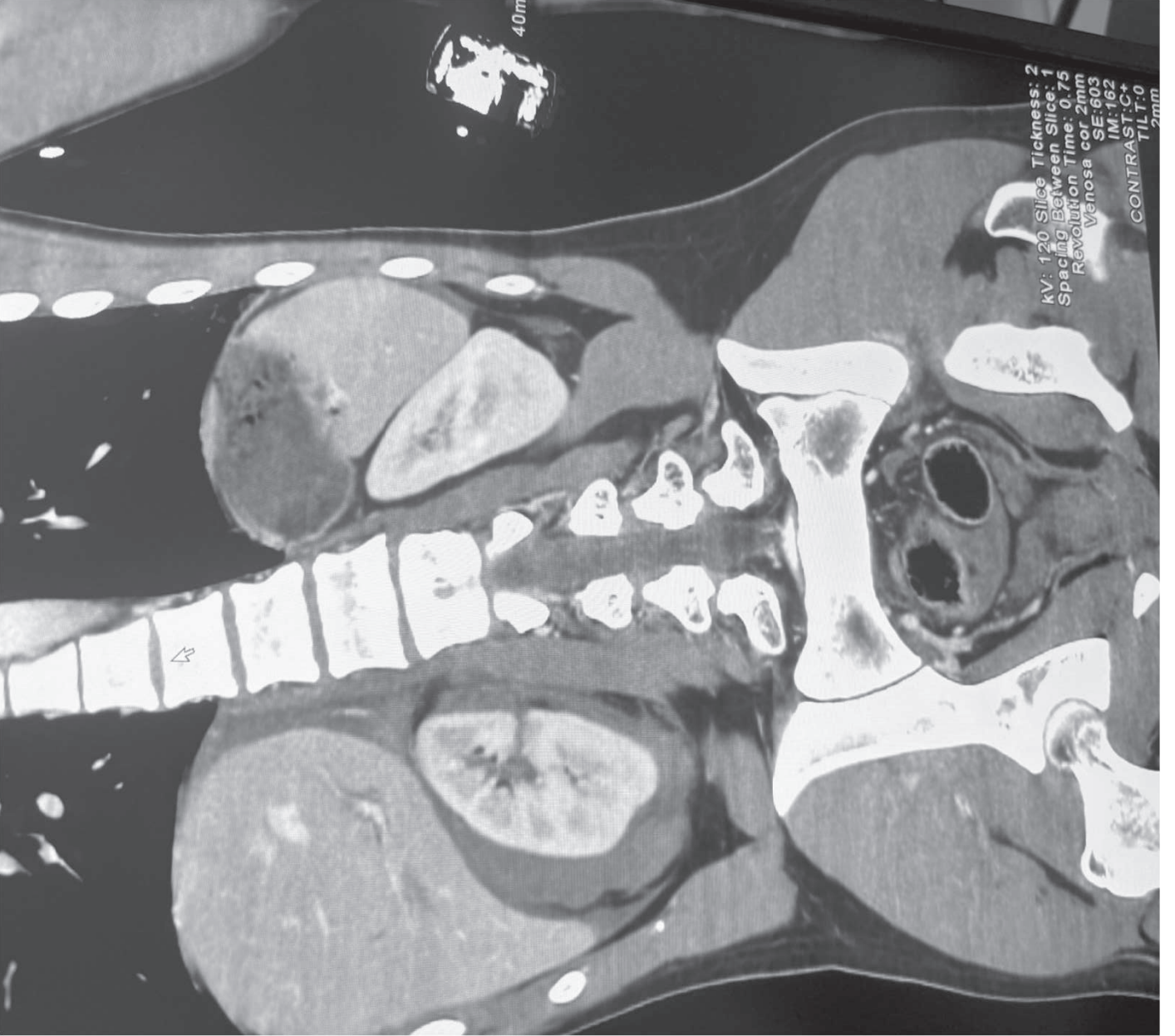








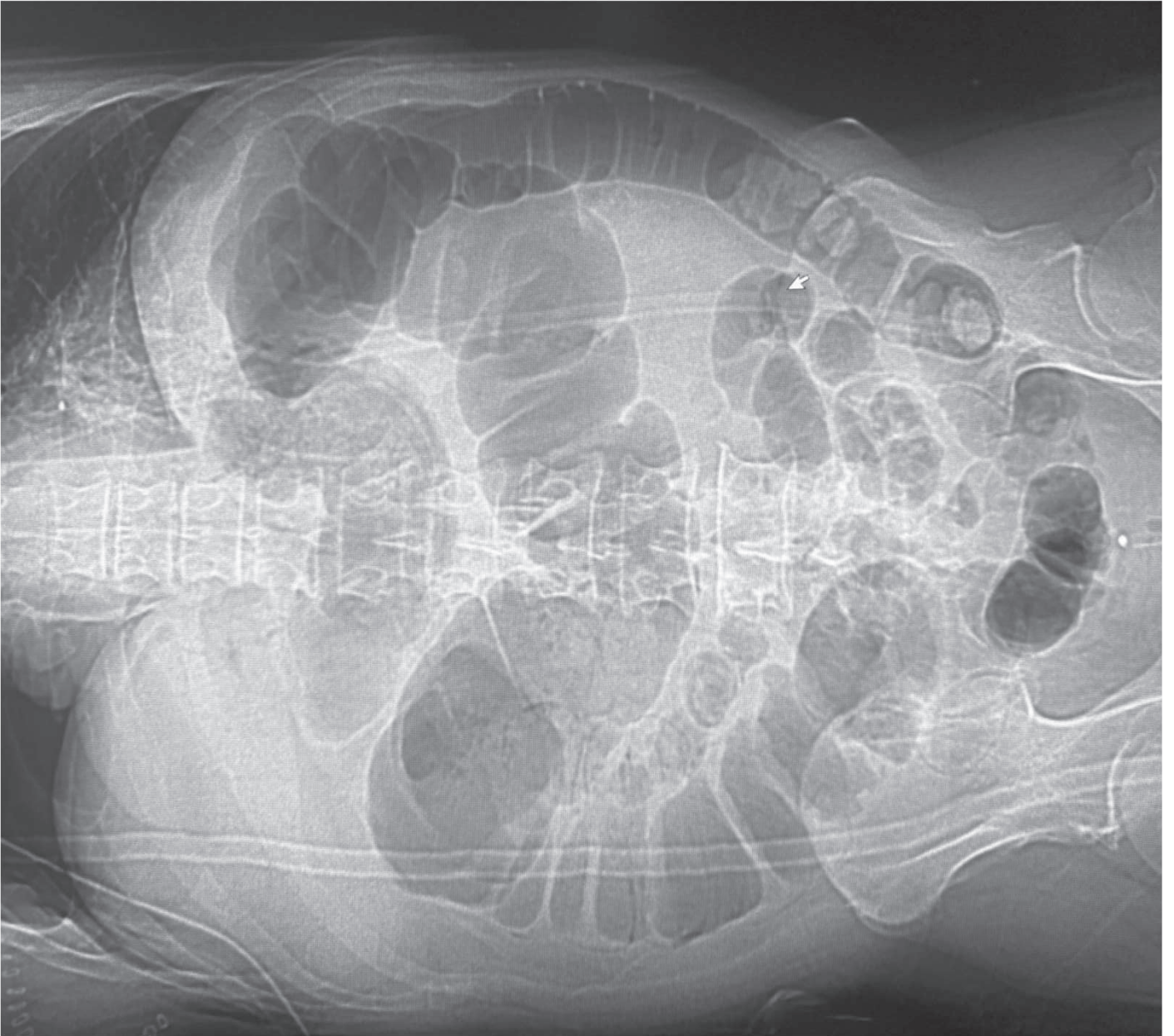
kV: 120 Slice Thickn  
Spacing Between S  
Revolution Time  
Venosa con  
CONTRAS  
TI

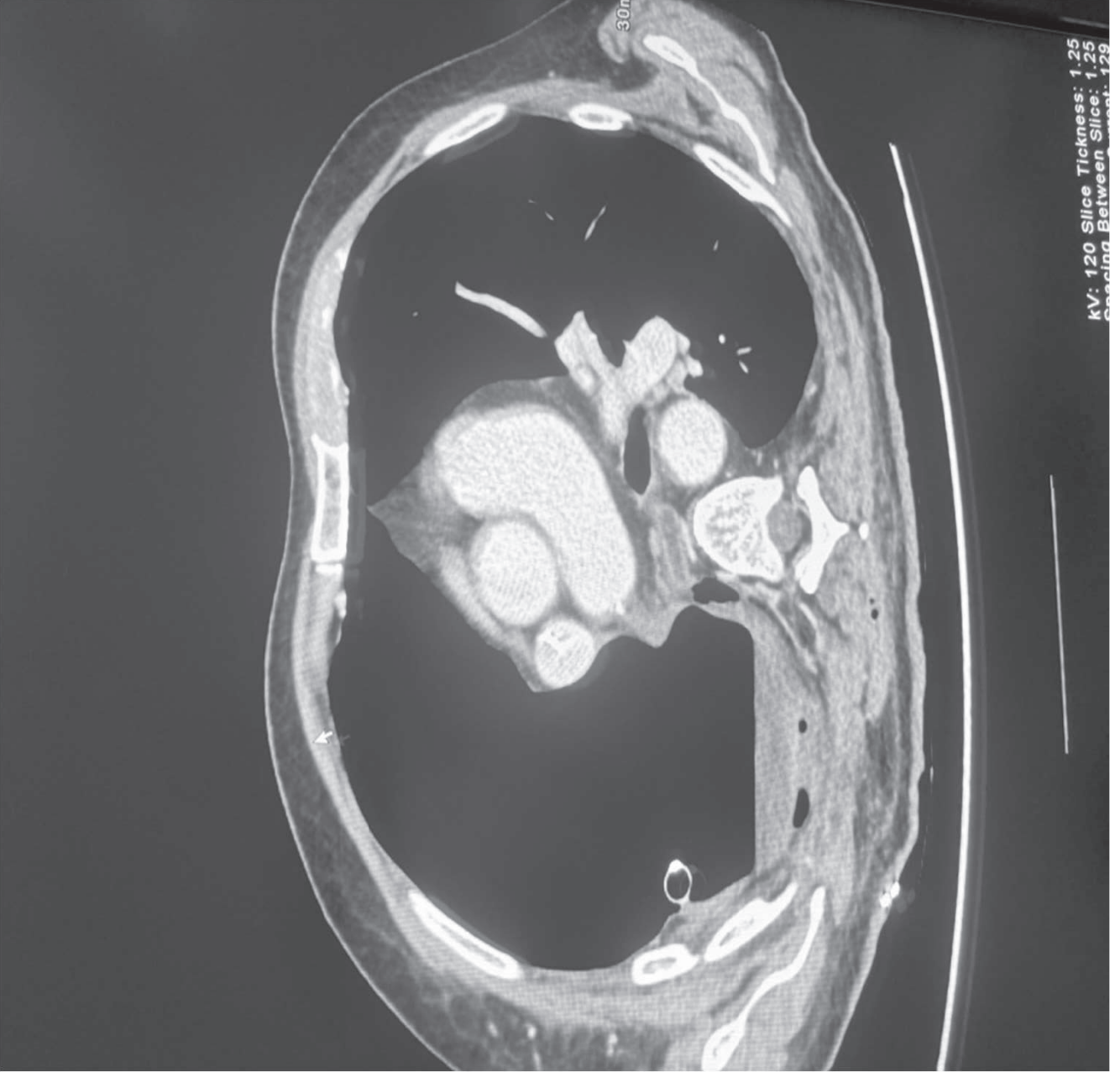


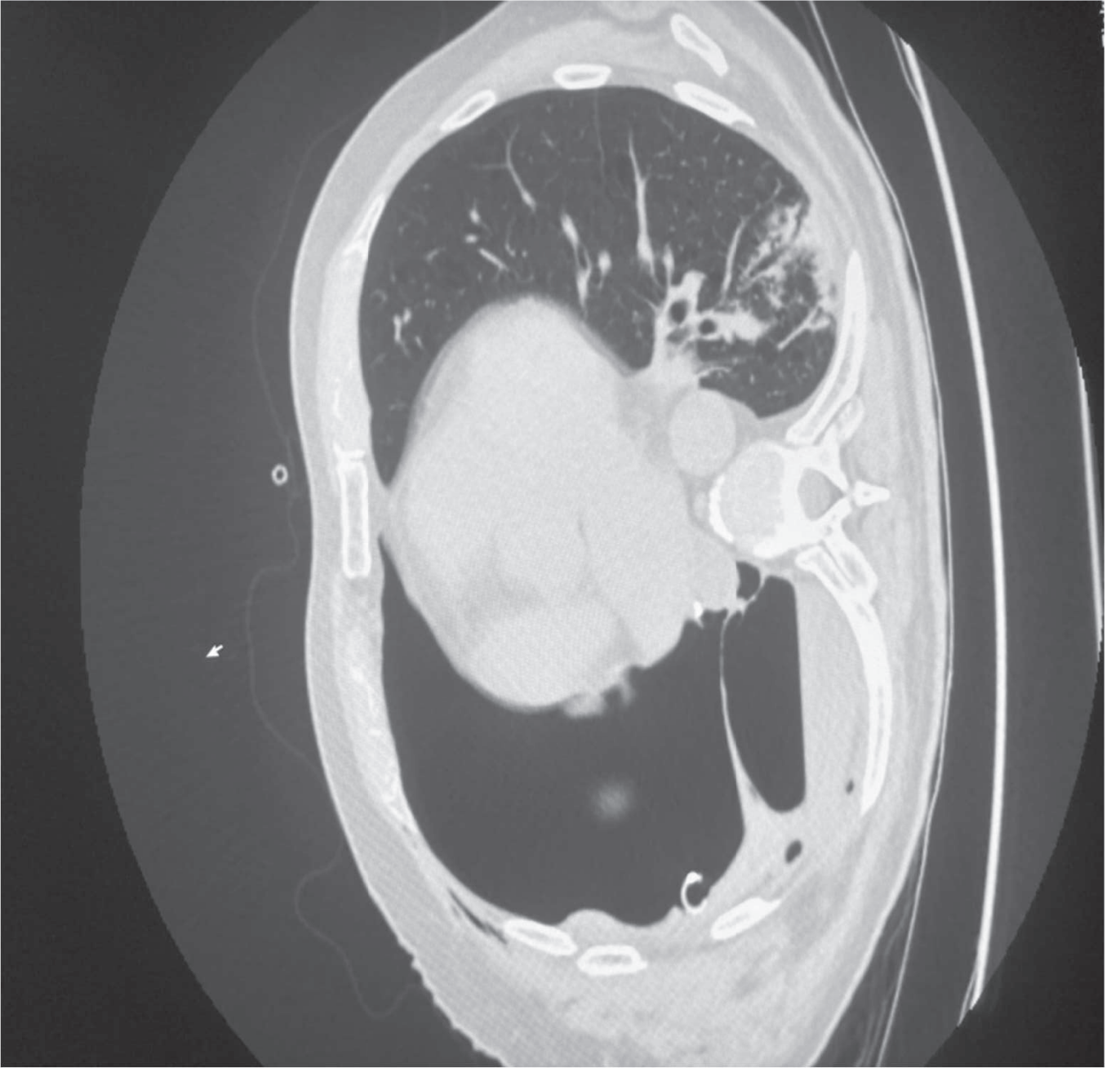
# Prova pratica n. 3

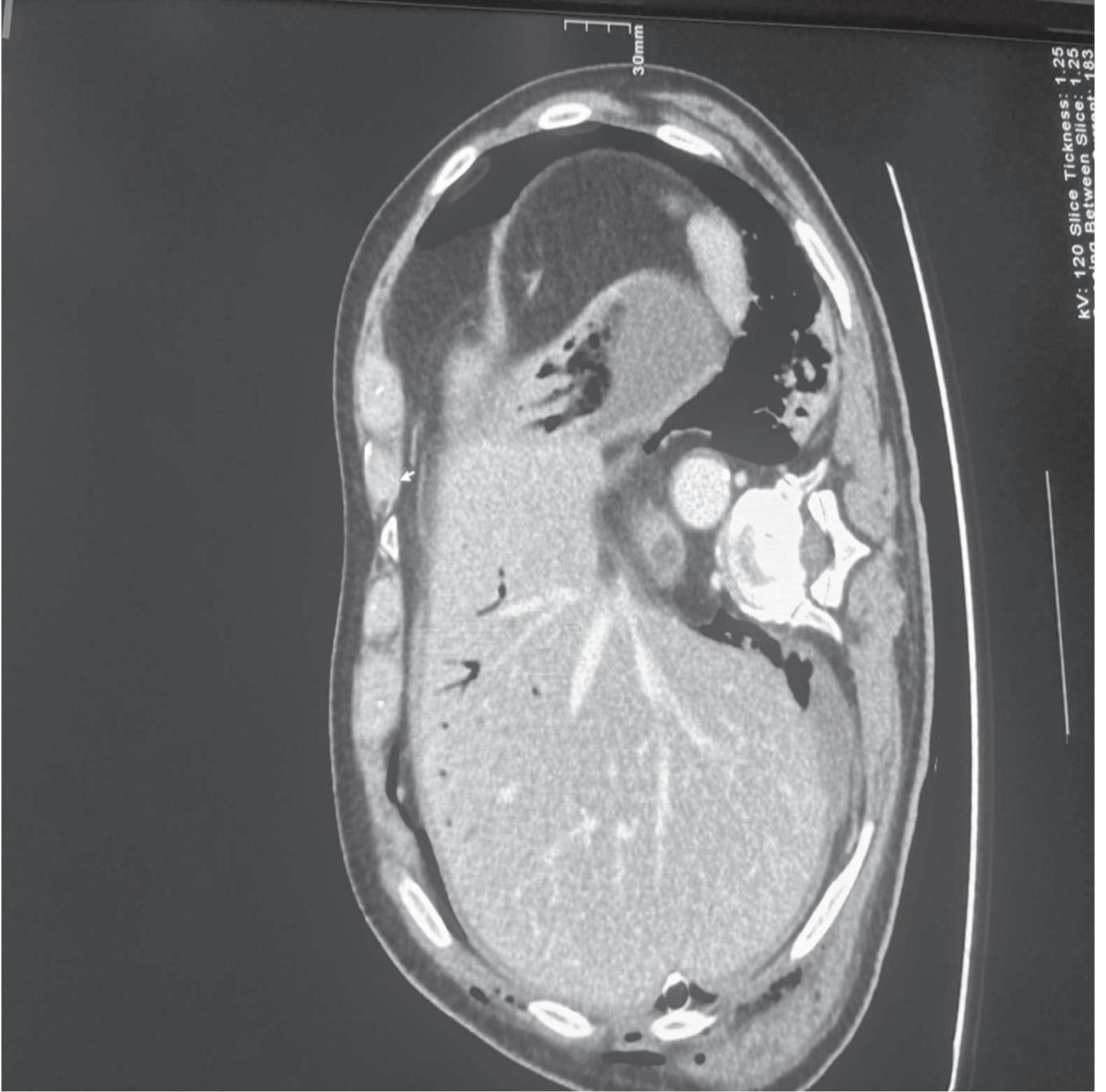
Paziente con  
recente pneumonectomia destra

- 66 aa.
- Ricoverato in Terapia Intensiva dopo pneumonectomia destra in 5° GPO
- Addome globoso non trattabile
- Rx addome
- Tc addome senza e con mdc









30mm

kV: 120 Slice Thickness: 1.25  
kV: 120 Slice Thickness: 1.25  
mm Between Slices: 1.25

